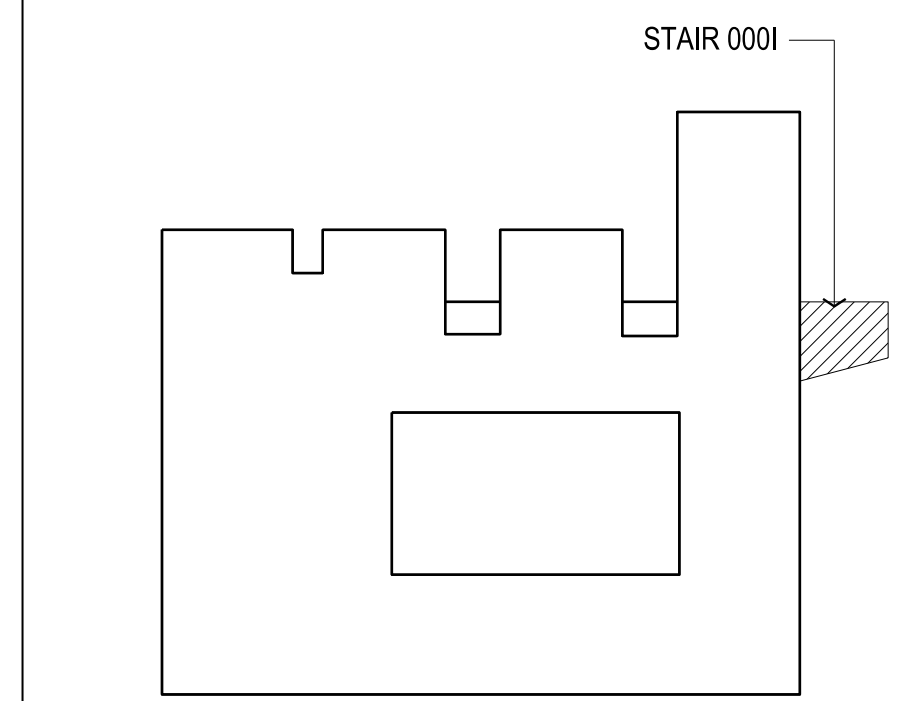
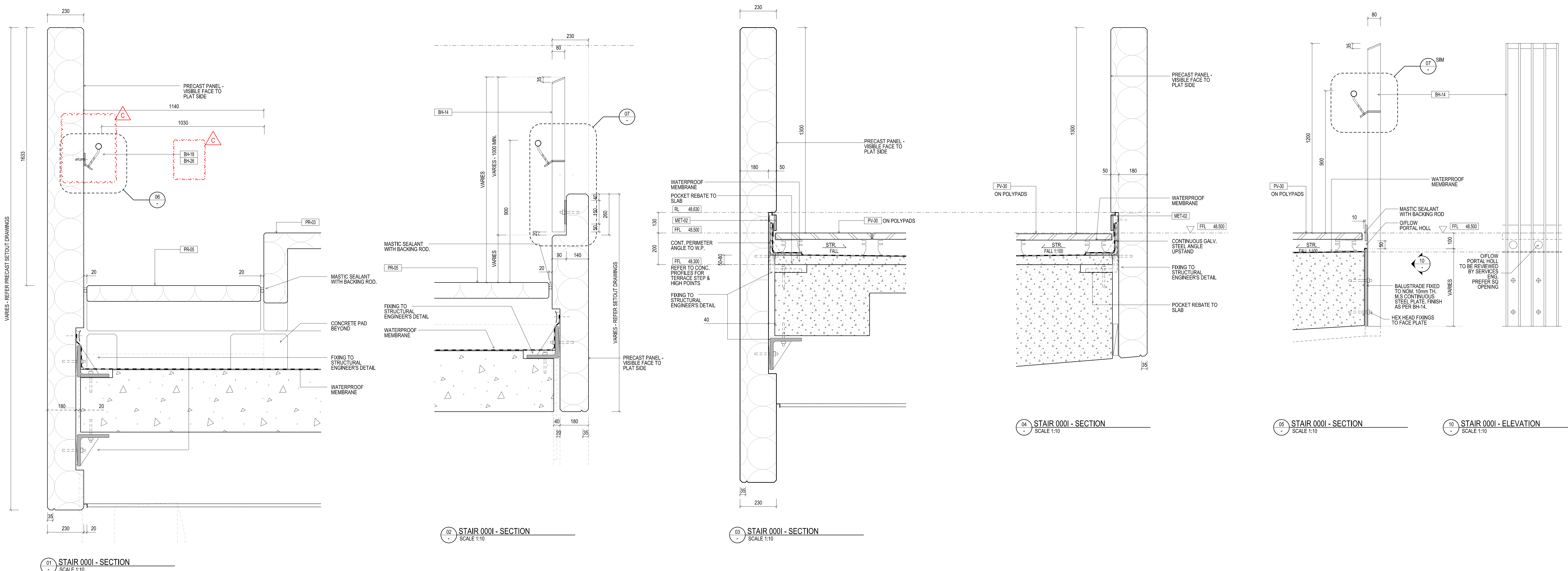


CONTRACTORS SHALL VERIFY JOB DIMENSIONS BEFORE ANY JOB COMMENCES. ALL SHOP DRAWINGS SHALL BE SUBMITTED TO THE SUPERINTENDENT AND MANUFACTURER SHALL NOT COMMENCE PRIOR TO THE RETURN OF DIMENSIONED SHOP DRAWINGS. BY THE CONSULTANT FOUR-DIMENSIONAL SHALL TAKE PRECEDENCE OVER SCALED. THIS DRAWING SHALL BE READ IN CONJUNCTION WITH ALL RELEVANT CONTRACT SPECIFICATIONS AND DRAWINGS COPYRIGHT OF THIS DRAWING IS VESTED IN HANDLE.

General Notes



Rev	Issue	Revision Description	And	Date
C	SG	BALUSTRADE UPDATES AS CLOUDED		29.01.14
B	SG	O/FLOW DETAIL ADDED		10.10.13
A	SG	BALUSTRADE UPDATES AS CLOUDED		27.09.13
		REV. TO BH-14 BALUSTRADE		
		REV. TO SUIT CAPPING BEAM AND PILES		
03	SG	REV. TO SUIT TERRACE POLYPAD INCLUSION		11.09.13
02	SG	VALUE MANAGEMENT ISSUE		28.03.13
01	SG	100% CO - TENDER ISSUE		07.09.12



NADAAA
 NADAAA
 1920 Washington Street No.2 Boston Massachusetts 02118 USA
 Telephone +1 617 442 8232
 Facsimile +1 688 442 1417
 Email nadaaa@nadaaa.com

John Wardle Architects
 25 Rokeby Street, Collingwood, Victoria 3066 Australia
 Tel: +61 3 8662 0400 www.johnwardlearchitects.com
 © 2014 John Wardle Architects ABN 83 006 814 268

Client **University of Melbourne Parkville Campus**

Project **Faculty of Architecture Building and Planning**

Title **STAIR DETAILS STAIR 0001**

Project No.	0913	Scale	1:10 @ A0 1:20 @ A2
Drawing No.	AR5031	Revision	C

Date: Oct 2011 Drawn: Co-Ord: Check:

FILENAME - SFRLES

FOR CONSTRUCTION